

Abu Tbeirah

Excavations I. Area 1

Last Phase and Building A – Phase 1

edited by
Licia Romano and Franco D'Agostino



Collana Materiali e documenti 44

Abu Tbeirah
Excavations I. Area 1
Last Phase and Building A – Phase 1

edited by
Licia Romano and Franco D'Agostino



SAPIENZA
UNIVERSITÀ EDITRICE
2019



STATE BOARD FOR ANTIQUITIES
& HERITAGE, IRAQ

Copyright © 2019

Sapienza Università Editrice
Piazzale Aldo Moro 5 – 00185 Roma

www.editricesapienza.it
editrice.sapienza@uniroma1.it

Iscrizione Registro Operatori Comunicazione n. 11420

ISBN 978-88-9377-108-5

DOI 10.13.133-9788893771085

Pubblicato giugno 2019



Quest'opera è distribuita
con licenza Creative Commons 3.0
diffusa in modalità *open access*.

*This book is dedicated to Amir Doshi,
whose friendship is the pillar
of our work at Abu Tbeirah*

Table of Contents

1. Foreword (F. D’Agostino - L. Romano)	1	5.3 Results	54
1.1 Registering Systems	5	5.3.1 Archaeological Sites	54
1.2 Acknowledgments	5	5.3.2 Palaeochannels	54
1.3 Members of the Excavation Campaigns at Abu Tbeirah	7	5.3.3 “Hollow Ways”	54
2. Let’s Dig It! The Story of Abu Tbeirah in the Vicinity of Ur (A. Hamdani)	9	5.3.4 Grooves	54
3. Geology and Palaeoenvironment of Nasiriyah Area/Southern Mesopotamia (S. Milli - L. Forti)	19	5.3.5 Crevasse Splays	54
3.1 Geomorphology	21	5.4 Conclusions	54
3.2 Geological Setting	23	References	57
3.3 The Quaternary Deposits	24	6. Abu Tbeirah and Area 1 in the Second Half of the 3 rd Mill. BC (L. Romano)	59
3.4 The Holocene Stratigraphy and Sedimentology of the Southern Mesopotamian Plain	26	6.1 Abu Tbeirah: Overview of the Site	61
3.5 Stratigraphy of the Nasiriyah Sector	31	6.1.1 Post-Depositional Alterations and Taphonomic Agents	64
References	33	6.2 Cemetery and Other Activities	66
4. Palaeoenvironment, Climate and Land Use in Southern Mesopotamia/Nasiriyah Area (A. Celant - D. Magri)	39	6.2.1 Cemetery or Sub-Pavimental Burials?	66
4.1 The Mesopotamian Palaeoenvironment	41	6.2.2 Abu Tbeirah’s Burial Practices	68
4.2 The 4.2 ka BP Event	43	6.2.3 Insights into the ED III - Akk. Funerary Practices	72
4.3 The Abu Tbeirah Plant Remains: Preliminary Insights	45	6.3 Building A	76
References	46	6.3.1 Building Techniques and Materials	77
5. The Environment and Landscape Archaeology of the Abu Tbeirah Region (J. Jotheri)	49	6.3.2 Plan, Circulation System and Natural Lighting	78
5.1 Introduction	51	6.3.3 Fire Installations and Artificial Illumination of the Building	79
5.2 Methodology	53	6.3.4 Sub-Pavement Graves	81
5.2.1 Remote Sensing	53	6.3.5 Dog (Ritual?) Deposition	82
5.2.2 Groundtruthing	53	6.3.6 Rooms Function(s) and Building A Household	83

6.4	Area 1: Towards an Abandonment Time-Line	84	8.2	Room 2	196
6.5	Future Perspectives	86	8.3	Room 3	205
	References	87	8.4	Room 4	206
7.	Area 1: Cemetery and Other Activities (L. Romano - A.K. Ghanim)	93	8.5	Room 5	214
7.1	Mc-fXIII1-4	95	8.6	Room 6	220
7.1.1	Other Activities	95	8.7	Room 7	222
7.1.2	Grave 1	109	8.8	Room 8	225
7.1.3	Grave 2	112	8.9	Room 9	231
7.1.4	Grave 3	114	8.1	Room 10	236
7.1.5	Grave 6	116	8.11	Room 11	238
7.1.6	Grave 11	122	8.12	Room 12	243
7.2	MdXIII5+6+MeXIII5	126	8.13	Room 13	245
7.2.1	Grave 15	126	8.14	Room 14-15	250
7.2.2	Grave 16	133	8.15	Room 16	258
7.2.3	Other Activities	141	8.16	Room 17+19+21	262
7.3	Mb-cXIII5	158	8.17	Room 18	266
7.3.1	Grave 22	158	8.18	Room 20	268
7.4	Mb-dXIII6-7	165	8.19	Room 22	269
7.4.1	Other Activities	165	8.20	Room 23	271
7.4.2	Grave 17	169	8.21	Building A North-Western Outside	277
7.4.3	MdXIII7	173	9.	Micro-Debris Analysis of Building A - Phase 1 Room 23 (S. Cereda)	311
7.5	MdXIII6+MeXIII5+6	174	9.1	Introduction	313
7.5.1	Other Activities	174	9.2	Use of Space and Microscopic Record	313
7.6	MfXIII3-5	179	9.3	Data Acquisition and Processing	314
7.6.1	Other Activities	179	9.4	Results of Micro-Debris Analysis	315
7.6.2	Grave 21	179	9.5	Discussion of Results and Interpretation of Room 23	318
7.6.3	Grave 23	181	9.6	Conclusions	320
7.7	Mg-hXIII5-4	182		References	322
7.7.1	Grave 24	182	10.	Area 1 Pottery - Part 1: A Preliminary Assessment on Typology, Technology and Use (L. Romano - M. Zingale)	323
8.	Building A - Phase 1 (L. Romano - T. al-Hosseini)	189	10.1	Introduction	325
8.1	Room 1	191	10.2	Methodology	326

10.3	Typology	327	12.2.1	Description of the Burials and Preliminary Osteological Information	393
10.3.1	Open Shapes	327	12.3	Sub Pavimental Graves of Building A - Phase 1	398
10.3.2	Closed Shapes	335	12.3.1	Description of the Burials	398
10.3.3	Miscellaneous Vessels	339	12.4	Preliminary Osteological Notes	401
10.3.4	List of Pottery Vessels Considered in the Envelopes	341	12.5	The Isotopic Investigation	402
10.4	Shaping and Manufacturing Process	342	12.5.1	Stable Carbon and Nitrogen Isotopes	402
10.4.1	Insights into the Production of the Main Pottery Shapes	342	12.5.2	Strontium Isotopes Ratio	404
10.4.2	Surface Treatments and Decorations	355	12.6	Concluding Remarks	404
10.5	Use and Re-Use	360		References	405
10.6	Conclusions	362	13.	Faunal Remains (F. Alhaique)	419
	References	365	13.0	General Introduction	421
11.	Area 1 Pottery - Part 2: Clay, Fabrics and Firing Technology (G. Festa - V. Forte - L. Romano)	371	13.1	Area 1 Cemetery and Latest Activities	421
11.1	Introduction	373	13.1.1	Introduction	421
11.2	Mesopotamian Clay Sources	373	13.1.2	Grave 1	422
11.3	Macroscopic Classification of Ceramic Pastes	375	13.1.3	Grave 2	422
11.3.1	Selected Fragments	376	13.1.4	Grave 3	422
11.4	Neutron Investigations: Results and Discussion	378	13.1.5	Grave 6	422
11.4.1	Neutron Diffraction	378	13.1.6	Grave 11	422
11.4.2	Neutron Resonance Capture Analysis	379	13.1.7	Grave 15	422
11.4.3	Classification of the Samples on the Basis of the ND and NRCA	379	13.1.8	Grave 16	422
11.4.4	Autoptic V/S Neutron Classification	382	13.1.9	Grave 17	423
11.5	Insights into the Clay Selection and Firing Process	383	13.1.10	Grave 21	423
	References	385	13.1.11	Grave 22	423
12.	The Human Remains (M.A. Tafuri)	389	13.1.14	Grave 25	424
12.1	Introduction	391	13.1.15	Pit Under Graves 15 and 16 (MdXIII5+6+MeXIII5)	424
12.2	Area 1 Cemetery	393	13.1.16	Mc-f XIII 1-4	425
			13.1.17	MdXIII6+MeXIII5+6	425
			13.1.18	Mb-dXIII6-7	426
			13.1.19	Discussion - Cemetery and Latest Activities	426
			13.2	Area 1 Building A - Phase 1	426

13.2.1	Introduction	426	14.3	Raw Materials	442
13.2.2	Room 1	428	14.3.1	Artifacts Patination	443
13.2.3	Room 2	429	14.3.2	Preliminary Data About Chert Petrography	444
13.2.4	Room 3	429	14.3.3	Chert Availability in Southern Mesopotamia	444
13.2.5	Room 4	429	14.4	Blade Production	445
13.2.6	Room 5	429	14.4.1	Knapping Technique	446
13.2.7	Room 6	430	14.4.2	Technical Blades	447
13.2.8	Room 7	430	14.5	Sickle Production	447
13.2.9	Room 8	430	14.5.1	Retouch	447
13.2.10	Room 9	430	14.5.2	The Sickle Fragment from Building A - Room 23	448
13.2.11	Room 10	430	14.6	Conclusions	450
13.2.12	Room 11	430		References	451
13.2.13	Room 12	431	15.	Chipped Stone Artifacts: Use Wear Analysis (D. D'Errico)	455
13.2.14	Room 13	431	15.1	Introduction	457
13.2.15	Room 14 and Room 15	431	15.2	Results from Building A - Phase 1 Chert Tools	458
13.2.16	Room 16	432	15.3	The Sickle Elements of the Bitumen Handle AbT.15.114 (Building A - Phase 1 - Room 23)	459
13.2.17	Rooms 17+19+21	432	15.4	Conclusions	460
13.2.18	Room 18	432		References	462
13.2.19	Room 20	432	16.	Abu Tbeirah: A Philological and Epigraphic Point of View (F. D'Agostino - A. Greco)	463
13.2.20	Room 22	432	16.1	Premise 465	
13.2.21	Room 23	433	16.2	The Water System of Abu Tbeirah	465
13.2.22	Outside Building A North-Western Side	433	16.3	Literary Compositions Describing Routes in the Proximity of Ur	467
13.2.23	Discussion - Building A - Phase 1	434	16.4	Cities in the Vicinity of Ur	468
13.3	Conclusion - Faunal Remains from Area 1	435	16.4.1	Enegir	469
	References	437	16.4.2	Kiabrig	470
14.	Chipped Stone Artifacts: Technological Analysis (D. Moscone)	439			
14.1	Introduction	441			
14.2	Composition of the Lithic Assemblage	441			

16.4.3	Ĝešbanda	471
16.4.4	Ga'eš	472
16.4.5	Aššu/Eššu	473
16.5	Conclusions	473
	Appendix. Fragments of Tablets and Inscribed Bricks from AbT	474
	References	476

CHAPTER 5

THE ENVIRONMENT AND LANDSCAPE ARCHAEOLOGY OF THE ABU TBEIRAH REGION



CHAPTER 5

THE ENVIRONMENT AND LANDSCAPE

ARCHAEOLOGY OF THE ABU TBEIRAH REGION

Jaafar Jotheri
Archaeology Department
Al-Qadisiyah University, Iraq
jaafar.jotheri@qu.edu.iq

5.1 INTRODUCTION

The main aim of this paper is to understand and reconstruct the ancient landscape around the Abu Tbeirah site and also to uncover ancient environments. To accomplish these goals, a multi-disciplinary method of research including remote sensing analysis, ground-truthing and digging shallow boreholes was carried out to identify the origin, properties and nature of landscape features in the region. Geomorphological features, including archaeological sites, palaeochannels, “hollow ways”, crevasse splays and grooves were traced and mapped. A six-metre borehole

was dug to recognise the lithological facies and environments. Then 3 samples of organic materials were dated by ^{14}C analysis to determine the age of these environments.

The Mesopotamian floodplain was mostly built by the accumulation of sediments from the Tigris and the Euphrates during the Holocene period, as these rivers transported material from the highlands of southern Turkey, eastern Syria and northern Iraq and released it in the lowland area in central and southern Iraq, which is a large geological basin.¹ The geomorphological structure

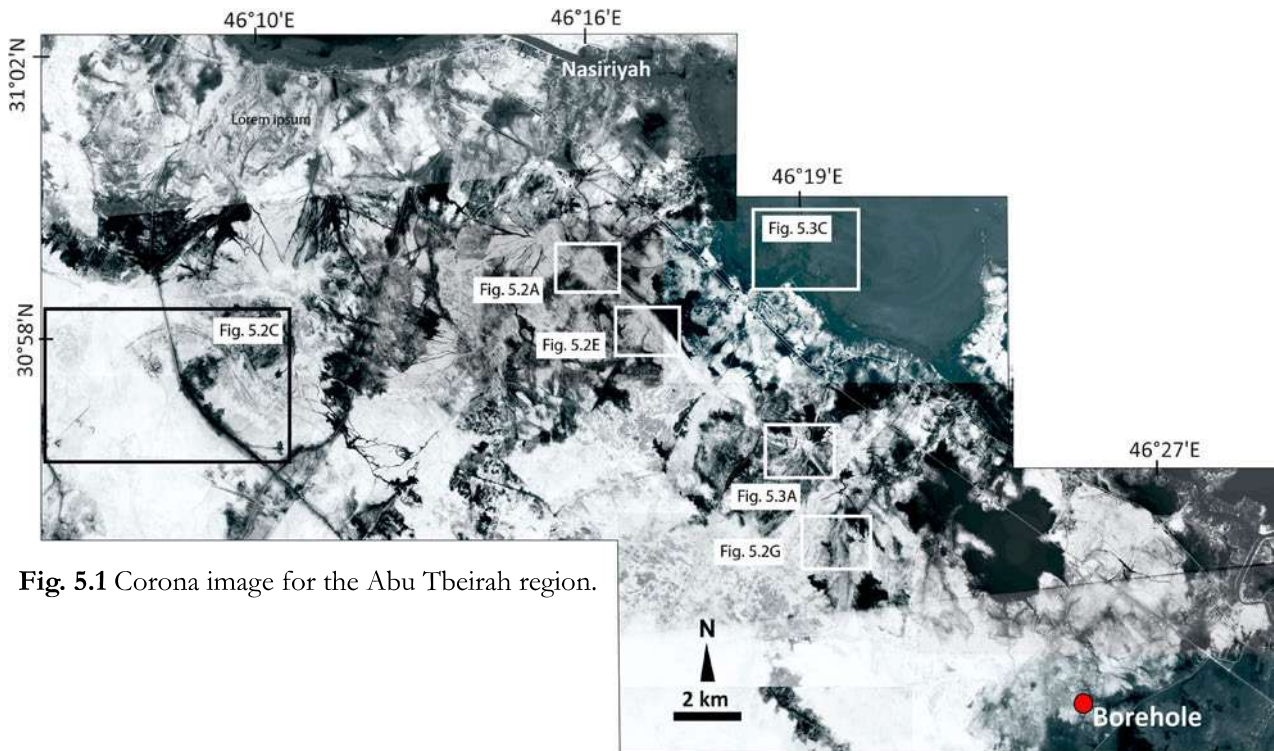


Fig. 5.1 Corona image for the Abu Tbeirah region.

¹ Garzanti *et al.* 2016.